



Heather Epstein
Di Marais
Andreas Groenewald

Outline

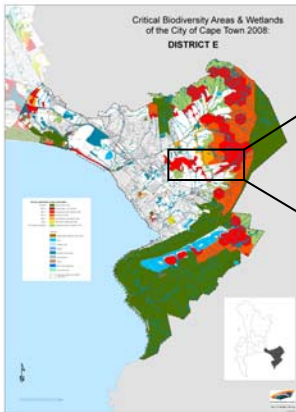
Walks for Biodiversity and Wine on the Schapenberg



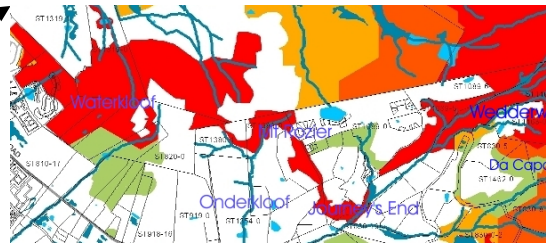
The Schapenberg Sir Lowry's Conservancy recently launched their Biodiversity and Wine Walks on the Schapenberg Hills in the Somerset West-Sir Lowry's Pass vicinity. The area is under huge threat by agriculture, development and invasive alien vegetation. The walks will follow biodiversity corridors and be guided to educate as to the importance of the corridors. Wine tasting will be offered. Monies from the walks will go towards restoring and preserving the endangered land within the Conservancy identified by the City as Critical Irreplaceable Biodiversity areas (see red areas in map below, right).

Aim

To restore and preserve the land within the Conservancy identified by the City as Biodiversity corridors including about 5km along the banks of the Sir Lowry's Pass River. Much of the area was ravaged by the devastating fires recently



Walk area on the Schapenberg Hills



Support

This project has been endorsed by the Biodiversity and Wine Initiative's Inga Kotze, Pat Holmes of the City of Cape Town, Barbara Court of the Sir Lowry's Pass Tourism Initiative, Dave MacDonald of the the Helderberg Conservation Forum and Cape Town tourism who will all give practical support.

Funding is sought to initiate the project. Monies are required for advertising, training of guides and to assist farmers clear burnt and alien infected natural areas.

Stakeholders

Participating in the project are 6 wine farms (Waterkloof, Onderkloof, Mt Rozier, Journey's End, Wedderwill and Da Capo) and other landowners (Highberry, Myrtle Grove, Ravensberg) over whose properties the walks will traverse. Wedderwill and Waterkloof are Biodiversity and Wine Initiative (BWI) champions and others are applying for BWI membership. Local equestrian centres will offer horse trails.



Outcomes

1. Environmental education as to the needs for biodiversity corridors and their conservation.
2. Restoration of the few remaining fynbos areas on the Schapenberg and surrounding mountains and along the Sir Lowry's River where Boland Granite Fynbos (Endangered) and Swartland Granite Renosterveld (SGR) (Critically Endangered) occur.
3. The establishment of a biodiversity and wine route in the Schapenberg region.
4. An increase in tourism to the area which would generate more work opportunities for the local people.
5. An increase in wine sales at local wineries.
6. Employment for many of the village people as guides, members of teams clearing and rehabilitating fynbos areas (especially important after the fires) and involvement in other support projects for the walks (catering, tea gardens, guest house, taxi/bus services etc).



Contact

Schapenberg-Sir Lowry's Conservancy
PO Box 246 Sir Lowry's Pass
7133

Email secretary: dimarais@kingsley.co.za

☎: 021 8581532

Cell: 0824623624